

TWF1 Antibody (Center)
Purified Rabbit Polyclonal Antibody (Pab)
Catalog # AP21742c**Specification**

TWF1 Antibody (Center) - Product Information

| | |
|-------------------|------------------------|
| Application | WB,E |
| Primary Accession | Q12792 |
| Reactivity | Human, Mouse |
| Host | Rabbit |
| Clonality | polyclonal |
| Isotype | Rabbit IgG |
| Calculated MW | 40283 |

TWF1 Antibody (Center) - Additional Information**Gene ID** 5756**Other Names**

Twinfilin-1, Protein A6, Protein tyrosine kinase 9, TWF1, PTK9

Target/Specificity

This TWF1 antibody is generated from a rabbit immunized with a KLH conjugated synthetic peptide between 201-235 amino acids from the Central region of human TWF1.

Dilution

WB~~1:2000

E~~Use at an assay dependent concentration.

Format

Purified polyclonal antibody supplied in PBS with 0.09% (W/V) sodium azide. This antibody is purified through a protein A column, followed by peptide affinity purification.

Storage

Maintain refrigerated at 2-8°C for up to 2 weeks. For long term storage store at -20°C in small aliquots to prevent freeze-thaw cycles.

Precautions

TWF1 Antibody (Center) is for research use only and not for use in diagnostic or therapeutic procedures.

TWF1 Antibody (Center) - Protein Information**Name** TWF1**Synonyms** PTK9**Function** Actin-binding protein involved in motile and morphological processes. Inhibits actin

polymerization, likely by sequestering G-actin. By capping the barbed ends of filaments, it also regulates motility. Seems to play an important role in clathrin-mediated endocytosis and distribution of endocytic organelles (By similarity).

Cellular Location

Cytoplasm. Cytoplasm, cytoskeleton. Note=Diffuse cytoplasmic localization with perinuclear and G-actin-rich cortical actin structures sublocalization. Also found at membrane ruffles and cell-cell contacts (By similarity).

Tissue Location

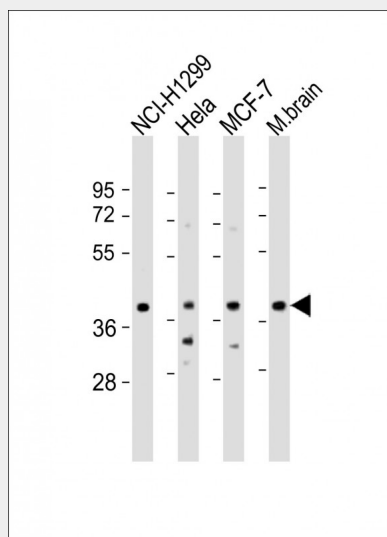
Expressed at high levels in the colon, testis, ovary, prostate and lung. Expressed at lower levels in the brain, bladder and heart. Not detected in liver.

TWF1 Antibody (Center) - Protocols

Provided below are standard protocols that you may find useful for product applications.

- [Western Blot](#)
- [Blocking Peptides](#)
- [Dot Blot](#)
- [Immunohistochemistry](#)
- [Immunofluorescence](#)
- [Immunoprecipitation](#)
- [Flow Cytometry](#)
- [Cell Culture](#)

TWF1 Antibody (Center) - Images



All lanes : Anti-TWF1 Antibody (Center) at 1:2000 dilution Lane 1: NCI-H1299 whole cell lysate Lane 2: HeLa whole cell lysate Lane 3: MCF-7 whole cell lysate Lane 4: mouse brain lysate Lysates/proteins at 20 µg per lane. Secondary Goat Anti-Rabbit IgG, (H+L), Peroxidase conjugated at 1/10000 dilution. Predicted band size : 40 kDa Blocking/Dilution buffer: 5% NFDM/TBST.

TWF1 Antibody (Center) - Background

Actin-binding protein involved in motile and morphological processes. Inhibits actin polymerization, likely by sequestering G-actin. By capping the barbed ends of filaments, it also

regulates motility. Seems to play an important role in clathrin-mediated endocytosis and distribution of endocytic organelles (By similarity).

TWF1 Antibody (Center) - References

Beeler J.F.,et al.Mol. Cell. Biol. 14:982-988(1994).
Ota T.,et al.Nat. Genet. 36:40-45(2004).
Halleck A.,et al.Submitted (JUN-2004) to the EMBL/GenBank/DDBJ databases.
Kalnine N.,et al.Submitted (OCT-2004) to the EMBL/GenBank/DDBJ databases.
Totoki Y.,et al.Submitted (MAR-2005) to the EMBL/GenBank/DDBJ databases.